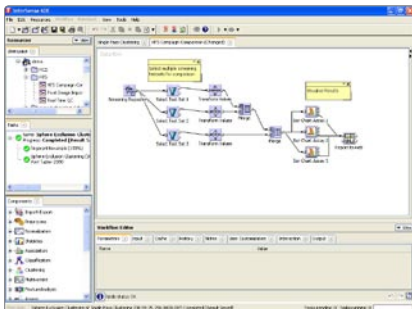


# InforSense Platform

## Fact Sheet

### With the InforSense Platform you can...

- Deliver interactive reports to your entire user base enabling them to dynamically explore and use data available in the organization
- Rapidly mash up databases, spreadsheets, and web services to provide the raw data required for daily reporting
- Apply a wide range of analysis techniques to your data as part of the reporting process including aggregation, predictive modelling, simulation and optimization
- Build a highly scalable reporting solution for thousands of users

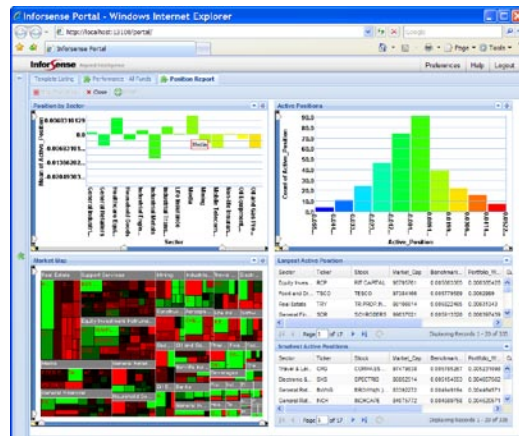


InforSense Workflow Builder

The challenges of business intelligence are constantly evolving and require a new approach to gathering, analyzing and delivering reports, dashboards and analytical services. The InforSense™ platform provides a next generation business intelligence solution that empowers organizations with BI that is more agile, more predictive and more visual built around a vertically integrated technology stack of data integration, in memory analytics and interactive visualisation.

### Agile Intelligence

Access to disparate data assets has always been a challenge when trying to deliver reports. Traditional approaches have focused on building a consistent view of the data by creating a warehouse or virtualized data space. However, this approach makes it difficult to keep your reports up to date with data created in spreadsheets and external web services. These sources of data are often not included (or must be included manually) in the reporting process. InforSense's unique database mash-up environment enables users to go beyond the data warehouse and dynamically join and aggregate data across multiple sources to quickly bring together the required data for reporting.



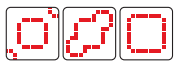
InforSense VisualSense

### Predictive Intelligence

Advanced analysis such as predictive modelling and data mining allows you to extract underlying patterns from raw data and make predictions about the likelihood of future events. This predictive intelligence provides extra insight beyond the basic aggregation techniques offered by other tools.

### Visual Intelligence

The biggest challenge in BI is to deliver reports that go beyond static reporting to enable further exploration of the data. InforSense VisualSense - InforSense's new interactive reporting solution - delivers data to users using a zero footprint AJAX application. VisualSense charts are interactive, allowing users to dynamically visualize and explore data sets without requesting a new report. Visualization techniques let users rapidly spot trends and patterns in their data, and complements existing reporting tools for those who want to go beyond existing business intelligence solutions.



### Feature Summary

- **InforSense Server**
  - Scalable Server for supporting the development and execution of analytical applications
  - Server Clustering
  - Server Federation
  - In-Database Processing
  - Synchronous Data Processing
  - Asynchronous Data Processing (Streaming)
  - Automatic Workflow Scheduling
  - Web Based Administration Console
  - Pluggable Authentication Mechanism
  - Roles Based Access Control
- **InforSense Workflow Builder**
  - Graphical Workflow Studio for building and executing analytical workflows
  - Java Web Start enabled for minimal installation and automatic updating of the Workflow Builder
  - Drag and Drop Workflow Environment
  - Embedded Visualization Tools
    - Table Editor
    - Interactive Browser (Scatter, Bar, Pie, Parallel Coordinates, and Venn Charts)
    - Cluster Browser
    - Dendrogram
    - Decision Tree Browsers
    - Hyperbolic Tree Browser
    - Association Rule Browser
    - Visualization Network
  - Deployment Environment
    - One-Click Deployment of workflows to portal, command line, SOAP Service, Spotfire
    - Layout Editor for defining the look and feel of portal pages
    - Service Linking to combine multiple portal pages together
- **InforSense Portal Server**
  - Web based access to deployed applications
  - Web based access to User Space objects
  - Automated process reporting
  - Remote Task monitoring and management
- **Import Export Functions**
  - Database Update
  - Execute Database Stored Procedure
  - Execute SQL Statement
  - Export to Database
  - Import Text to Table
  - Export to User Space
  - Export to Text File
  - Export to Excel Workbook
  - Import Local Text File to Table
  - Input Text
- **Transformation and Pre-processing Functions**
  - Remove Constant Columns
  - Column Type Conversion
  - Vector(s) to Columns
  - Discretize
  - Remove Nulls
  - Sampling
  - Table Statistics
  - Derive
  - Union
  - Row Split
  - Merge
  - Column(s) to Vector
  - Reorder Columns
  - Row Selection
  - Linear Scaling
  - Partition Data
  - Rename Column
  - Pivot
  - Replace
  - Delete
  - Over Sample Minority Class
  - Transpose
  - Series
  - Transform
  - Group By
  - Join
  - Sort
  - Difference
  - Filter
- **Data Normalization**
  - Normalize Data
  - Normalize Data using Control Rows
  - Normalize Data using Control Columns
- **Association Rules Analysis**
  - AR Matrix
  - AR Transactions
- **Cluster Analysis**
  - K-Means Clustering
  - Hierarchical Clustering
  - Expectation Maximization Clustering
- **Classification**
  - Decision Tree Learner
  - Decision Rule Learner
  - Bayesian Learner
  - Support Vector Machine
  - Ensemble Learner
- **Feature Selection Approaches**
  - Calculate Feature Information
  - Calculate Information Gain
  - RELIEF\_F Feature Selector
  - KNN Feature Selector
- **Multivariate Data Analysis**
  - Principle Components Analysis
  - Neural Network Regression
  - Partial Least Squares Regression
  - Regression (Linear, Polynomial)
- **Statistics**
  - T-Test
  - Kolmogorov-Smirnov Test
  - Wilcoxon Test
  - ANOVA
  - F-Test

- **Analysis Assessment**
  - Apply Model to Data
  - PCA Apply
  - PLS Apply
  - Statistics Test Apply
  - Transformation Apply
- **Visualization**
  - Series Plot
  - Pie Chart
  - Bar Chart
  - VisNet Link
  - Box Plot
  - Parallel Plot
  - Bin Plot
  - View Deployable Image
  - Tile Deployable Images
  - Scatter Plot
- **Reporting**
  - Email
  - Report to Powerpoint
  - Report to File
  - Table to Image
  - Report to Email
- **Web Services**
  - XML File
  - UDDI WSDL Binding
  - UDDI Service Search
  - XML Parser
  - SOAP Message
  - WS Annotate
  - Extract String
  - XPath (Table) Transform
  - XSL (Table) Transform
  - XPath Transform
  - XSL Transform
- **Control (Looping functionality)**
  - ForEach
  - Feedback-While
  - Script Switch

### System Requirements

Currently supported platforms include:

#### InforSense Workflow Builder:

Microsoft Windows 2000/XP and Mac OS X

#### InforSense Server:

Microsoft Windows 2000/XP/Server 2003, Mac OS X, Linux (x86, x64), Solaris 8 (SPARC)

Extension product requirements may vary so please check for compatibility.

For more information or a demonstration, please call us today to talk to one of our consultants.

[www.inforsense.com](http://www.inforsense.com)  
[information@infosense.com](mailto:information@infosense.com)

#### Europe:

InforSense Limited  
Colet Court,  
100 Hammersmith Road,  
London, W6 7JP, UK  
Tel: +44 (0)20 8237 8440  
Fax: +44 (0)20 8237 8441

#### North America:

InforSense LLC  
155 Second Street,  
Cambridge, MA 02141  
USA  
Tel: +1 617 547 2500  
Fax: +1 617 547 2772

©2007 InforSense Ltd.  
All rights reserved. InforSense, the InforSense logo, ClinicalSense and TextSense are registered trademarks of InforSense Ltd. Open Discovery Workflow is a trademark of InforSense Ltd. All other brands or product names are trademarks of their respective holders.